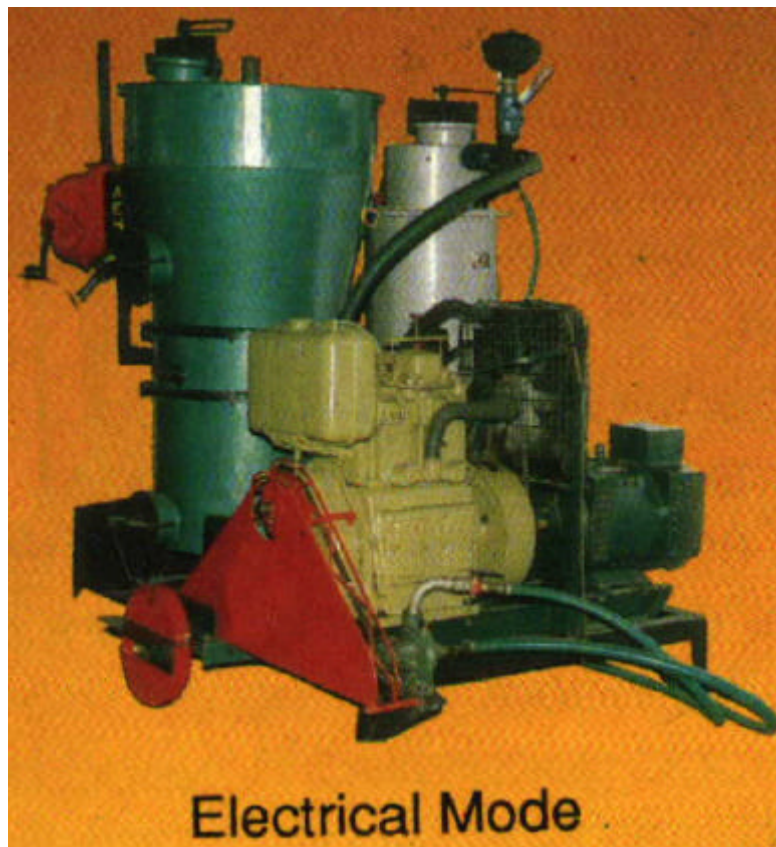
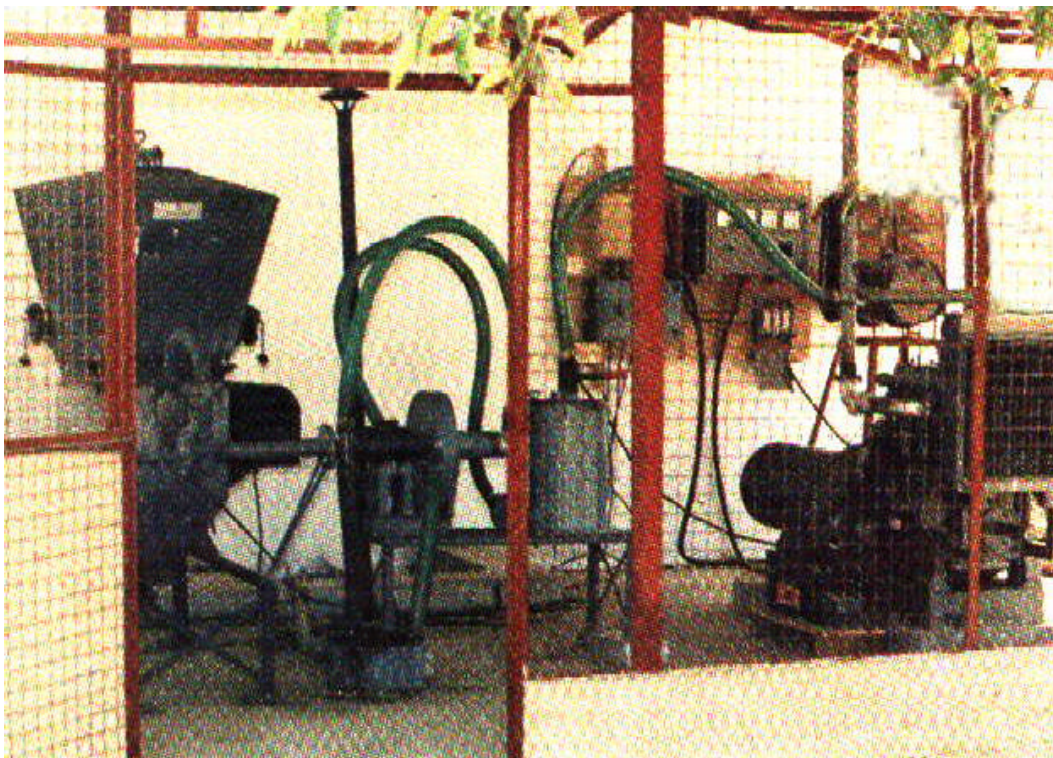


# BIOGAS PLANT

## A TYPICAL 20 kW GASIFIER BASED SYSTEM



Engineered & Exported by:

**ENCON** Consulting Engineers

M-28, 7th Floor, Marigold,

Krishnakeval Township,

Kondhwa Khurd,

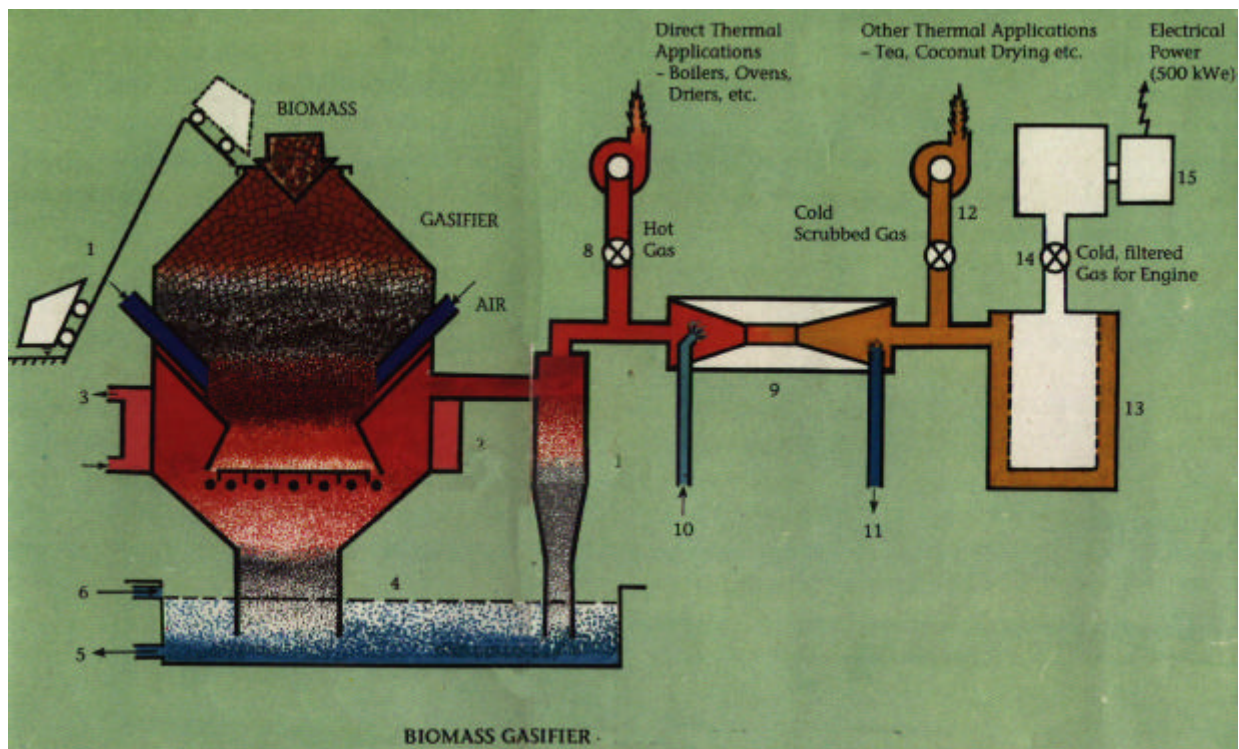
Pune 411048-INDIA.

Tel/Fax: +91 20 6831210

Cell Phone: +91 94 22 00 2758

Email: [encon@vsnl.com](mailto:encon@vsnl.com) / [enconindia@hotmail.com](mailto:enconindia@hotmail.com)

# BIOMASS GASIFIER (TYPICAL) - SCHEMATIC DIAGRAM



1. SKIP CHARGER
2. WATER JACKET FOR CO-GENERATION
3. HOT WATER FOR USE
4. ASH POND & WTAR SEAL
5. DIRTY WATER TO ASH FILTERING
6. CLEAN WATER RETURN FROM ASH FILTERING
7. HOT CYCLONE
8. HOT GAS FOR DIRECT THERMAL APPLICATIONS
9. VENTURI SCRUBBER
10. FILTERED WATER FROM COOLING-CLEANING POND
11. DIRTY WATER TO COOLING-CLEANING POND
12. COLD, SCRUBBED GAS FOR OTHER THERMAL APPL.
13. FABRIC FILTER
14. GOLD FILTERED GAS FOR ENGINE GENSET
15. DUAL-FUEL (DIESEL) ENGINE

Engineered & Exported by:

**ENCON** Consulting Engineers

P.O. Box: 1909.

6, Thorat Heights,

Nr. Chandni Chowk,

Paud Road, Pune 411 038. INDIA

Tel / Fax: +91 20 5282478 / 5281698.

Email: [encon@vsnl.com](mailto:encon@vsnl.com) / [enconindia@hotmail.com](mailto:enconindia@hotmail.com)

