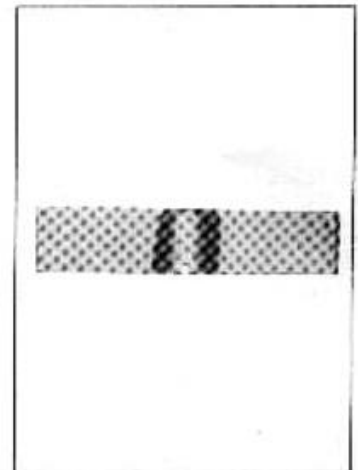
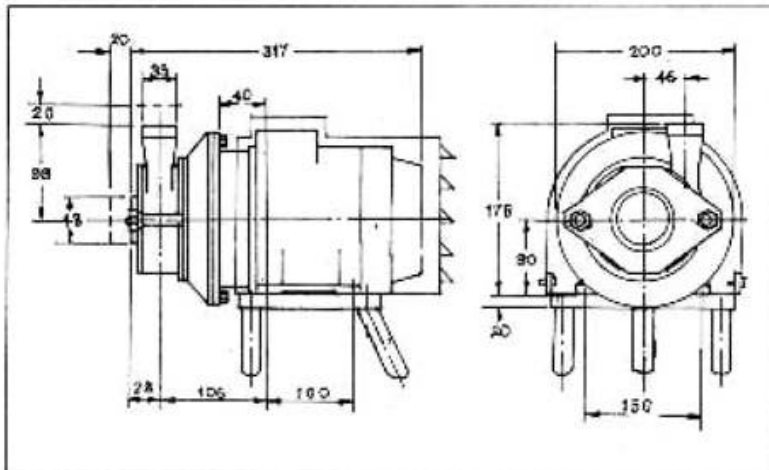
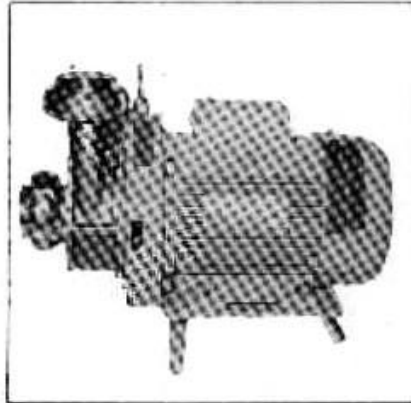


# Milk Pump Model FM OS Specifications.



## PUMPS FM OS PUMP



<b>APPLICATIONS</b>	: Food, Beverage, Chemical and other process Industries.
<b>PRIME MOVER</b>	: Standard motors of 1.5 hp running at 2840 rpm
<b>SHAFT SEALS</b>	: Balanced mechanical seal with rotating seal ring.
<b>IMPELLERS</b>	: Totally open impellers used 75 to 115mm .
<b>CAPACITY AND HEAD</b>	: MAX. CAPACITY : 30,000 LPH MAX. HEAD : 18 MWC
<b>CONNECTIONS</b>	: Complete unions according to optional std. (SMS / IDF/ FLANGE / ISO CLAMP)
<b>WEIGHT</b>	: 1.5 HP : 18 KG

Engineered & Exported by:

**ENCON** Consulting Engineers

[M-28, 7th Floor, Marigold,](#)

[Krishnakeval Township,](#)

[Kondhwa Khurd,](#)

[Pune 411048-INDIA.](#)

Tel/Fax: +91 20 6831210

Cell Phone: +91 94 22 00 2758

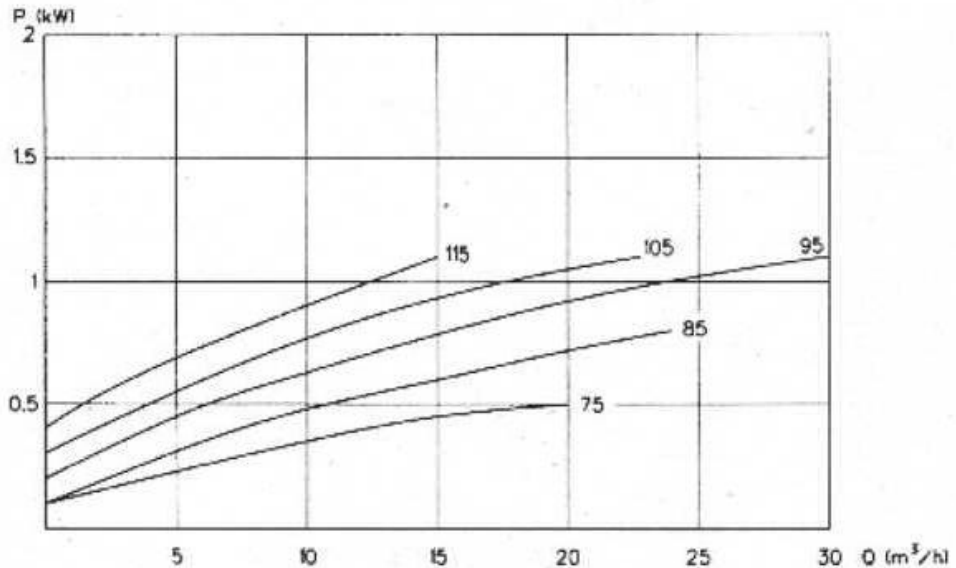
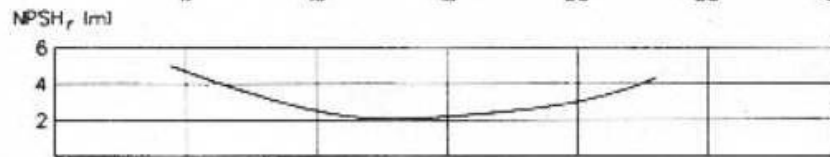
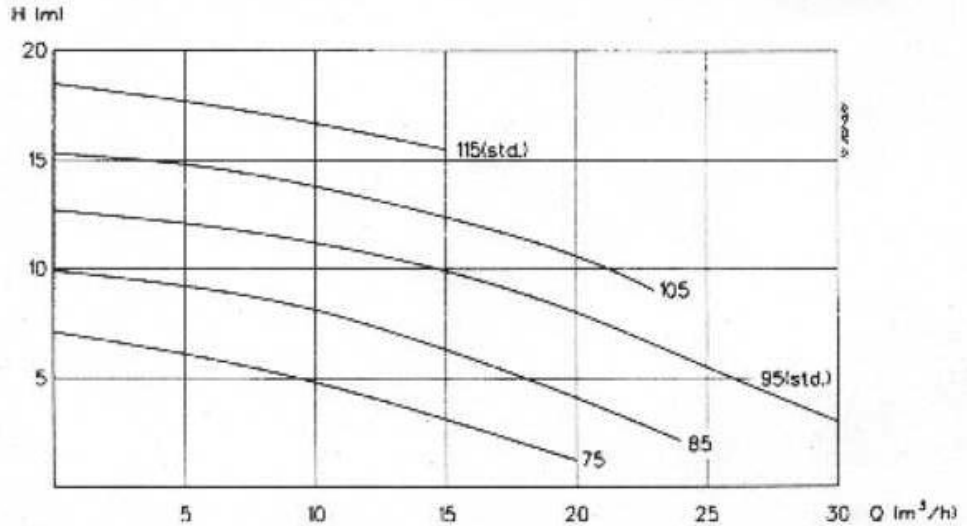
Email: [encon@vsnl.com](mailto:encon@vsnl.com) / [encon@sify.com](mailto:encon@sify.com)

# FLOW CHARTS FOR CENTRIFUGAL PUMPS



TYPE : <b>FM OS</b>	RPM : 3000	MOTOR : 1.5 HP	IMP. DIA 75 _____
			85 _____
			95 _____
TOL ACC TO ISO 2548			105 _____
Q ± 8 %			115 _____
H ± 6 %			

**NOTE!** The curves refer to max. motor: 1.1 kW, 2850 rpm. asynchr., 50 Hz.  
**DO NOT FORGET THE SAFETY FACTOR.**



Engineered & Exported by:

**ENCON** Consulting Engineers

M-28, 7th Floor, Marigold,  
 Krishnakeval Township,  
 Kondhwa Khurd,  
 Pune 411048-INDIA.

Tel/Fax: +91 20 6831210

Cell Phone: +91 94 22 00 2758

Email: [encon@vsnl.com](mailto:encon@vsnl.com) / [encon@sify.com](mailto:encon@sify.com)